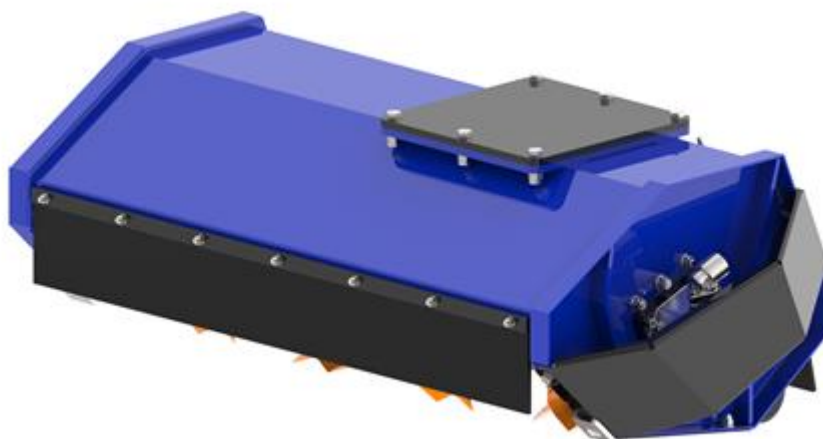








**DECESPUGLIATRICE IDRAULICA**
**LS3**
**HYDRAULIC HEDGE TRIMMER**


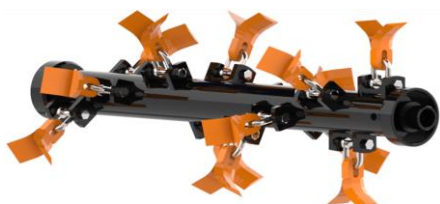
Modello - Model				Cilindrata Displacement	Bar min/max	Oil L/min		
<b>LS3 600</b>	2,0 – 4,0	750	130	8-11-16	170-220	20-30-40	Diretta	95-55-45
<b>LS3 800</b>	2,0 – 4,0	850	150	11-16	170-220	30-40	Direct	115-55-45
<b>LS3 1000</b>	4,0 – 6,0	1000	190	16-22	170-220	40-60	Diretta	130-60-40

**CARATTERISTICHE TECNICHE E DOTAZIONI STANDARD**

- Trasmissione diretta.
- Cofanatura interna a doppia cassa con intercapedine.
- Rullo di appoggio regolabile su 3 posizioni per variare l'altezza di taglio.
- Rotore elicoidale con mazze bonificate o coltelli intercambiabili.
- Protezione carter motore.
- Supporti rotore interni con labirinto per la protezione dei cuscinetti dalle impurità.
- Cuscinetti rotore a doppia corona di sfere orientabili di prima qualità.
- Blocco valvole comprensivo di valvola prioritaria per regolazione della portata olio, antiurto (valvola di max pressione), anticavitazione.
- Motore ad ingranaggi.
- Protezioni antinfortunistiche con catene a norma CE.

**TECHNICAL FEATURES AND STANDARD EQUIPMENT**

- Direct transmission.
- Internally reinforced with double metal sheet.
- Feeler roller adjustable on 3 positions to change the height of the cut.
- Helicoidal rotor with austempered hammers or blade interchangeable.
- Protective cover for motor.
- Inside rotor supports with "labyrinth" for the protection of the bearings by the impurities.
- Double row spherical adjustable bearings of 1st quality.
- Valves block complete with priority valve for adjusting oil flow, anti-shock valve (pressure relief valve), anti-cavitation.
- Gear motor.
- Accident prevention rubber protections according to EC directives.


**Rotore elicoidale  
Helicoidal Rotor**

**ACCESSORI**

- Protezione a catene anteriore.
- Supporto autolivellante.
- Motore 22cc gruppo 3.

**ACCESSORIES**

- Front chain protection.
- Self-levelling support
- Motor 22cc group 3

